

# New Hampshire MMIS Companion Guide to the 005010X214 Health Care Claim Acknowledgment (277CA)

Conduent EDI Solutions  
August 2017

© **2017** Conduent, Inc. All rights reserved. Conduent and Conduent Agile Star are trademarks of Conduent, Inc. and/or its subsidiaries in the United States and/or other countries.

Express permission to use the ASC X12 copyrighted materials has been granted.

# Preface

This Companion Guide to the Accredited Standards Committee (ASC) X12 Technical Report Type 3 (TR3) and associated errata adopted under HIPAA clarifies and specifies the data content when exchanging electronically with the New Hampshire MMIS. Transmissions based on this Companion Guide, used in tandem with the v5010 ASC X12N Implementation Guides (TR3), are compliant with both ASC X12N syntax and those guides. This Companion Guide is intended to convey information that is within the framework of the ASC X12N Implementation Guides (TR3) adopted for use under HIPAA. The Companion Guide is not intended to convey information that in any way exceeds the requirements or usages of data expressed in the Implementation Guides (TR3).

# Table of Contents

<b>1 Introduction</b> .....	<b>1</b>
Scope .....	1
Overview.....	2
References .....	2
Additional Information .....	2
<b>2 Getting Started</b> .....	<b>3</b>
Working with New Hampshire Medicaid .....	3
Trading Partner Registration .....	3
Certification and Testing Overview.....	4
<b>3 Testing with the New Hampshire MMIS</b> .....	<b>5</b>
<b>4 Connectivity with the New Hampshire MMIS</b> .....	<b>6</b>
Process Flows .....	6
Editing and Validation Flow Diagram.....	6
Transmission Administration Procedures .....	7
Re-Transmission Procedures.....	8
Communication Protocol Specifications .....	8
Web Portal .....	8
Passwords .....	15
<b>5 Contact Information</b> .....	<b>16</b>
EDI Customer Service .....	16
EDI Technical Assistance .....	16
Provider Services Number .....	16
Applicable Web site/E-mail .....	16
<b>6 Control Segments/ Envelopes</b> .....	<b>17</b>
ISA-IEA.....	17
GS-GE.....	17
ST-SE.....	18
<b>7 New Hampshire Medicaid Specific Business Rules and Limitations</b> .....	<b>19</b>
<b>8 Acknowledgements and/or Reports</b> .....	<b>20</b>
<b>9 Trading Partner Agreements</b> .....	<b>21</b>

Trading Partners .....	21
<b>10 Transaction Specific Information .....</b>	<b>22</b>
ASC X12N 277CA Health Care Claim Acknowledgment.....	22
<b>Appendices.....</b>	<b>24</b>
Implementation Checklist.....	24
Business Scenarios .....	24
Transmission Examples.....	24
Frequently Asked Questions .....	24
Change Summary .....	25

# 1 Introduction

This 277CA Companion Guide is intended for Trading Partner use in conjunction with the ASC X12N 277CA National Electronic Data Interchange Transaction Set Implementation Guide. The ASC X12N Implementation Guide can be accessed at <http://store.x12.org/store/healthcare-5010-consolidated-guides>.

This Companion Guide outlines the procedures necessary for engaging in Electronic Data Interchange (EDI) with the New Hampshire MMIS and specifies data clarification where applicable. [Section 10 Transaction Specific Information](#) contains provider data clarifications for fields and values that have changed.

Transaction specific data will be detailed using a table with the following information included (if applicable):

- TR3 Page
- Loop
- Segment
- Data Element
- Industry Name
- Comments

## Scope

This Companion Guide is intended for use by New Hampshire Medicaid Trading Partners for the retrieval of the X12N 277CA transactions from Conduent. This Companion Document is to be used in conjunction with the 277CA Implementation Guide and TR3. Conduent is the Fiscal Agent for New Hampshire Department of Health and Human Services (DHHS). Conduent will accept and process X12N transactions on behalf of New Hampshire Medicaid.

Conduent provides connectivity for the flow of medical information and data between medical providers, facilities, vendors, claim payment agencies, clearinghouses and the Front-end Online Transaction Processor (OLTP). Beyond the receipt and delivery of this data, Conduent EDI Solutions provides translation to and from ASC X12N standard formats.

Please refer to [Section 4 Connectivity with the New Hampshire MMIS](#) for more information regarding transmission methods.

# Overview

This Companion Guide is divided into 10 Sections. Each section will describe the process or requirement that each Trading Partner must complete to submit and receive X12N transactions for New Hampshire Medicaid.

Each section will provide the needed information of how Trading Partners will be required to complete successful transmissions to and from the New Hampshire Medicaid MMIS.

This Companion Guide will provide contact information for obtaining assistance from the New Hampshire Medicaid MMIS. As well as data clarifications, including New Hampshire Medicaid specific data requirements.

# References

This document serves as a companion to the ASC X12N Implementation Guides (TR3) as adopted under HIPAA. These can be accessed at:

<http://store.x12.org/store/healthcare-5010-consolidated-guides>

# Additional Information

For more information on New Hampshire Medicaid EDI services for providers, including provider enrollment and claim transaction information, please visit: <http://nhmmis.nh.gov>

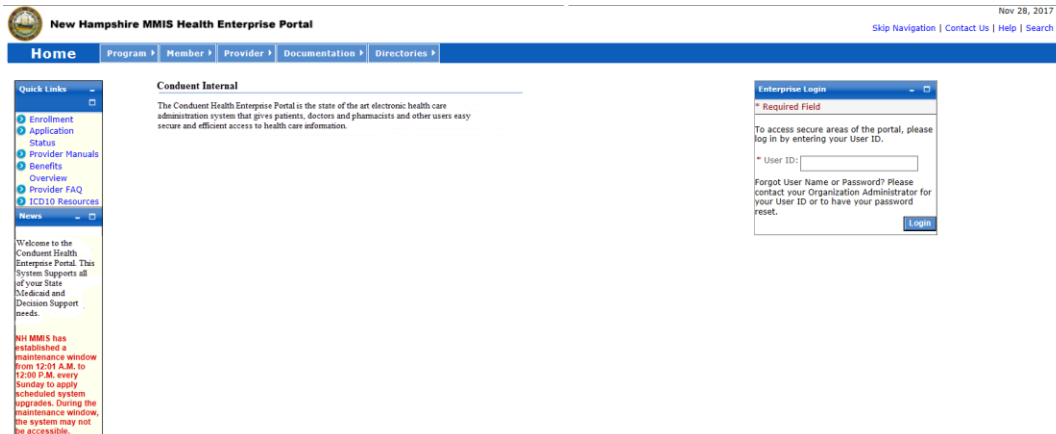
# 2 Getting Started

## Working with New Hampshire Medicaid

We provide availability for transaction transmission and download retrieval 24 hours a day, seven days a week. This availability is subject to scheduled downtime. It is operational policy to schedule preventative maintenance periods on weekends or after 9:00 p.m. Eastern Standard Time. Conduent EDI Solutions notifies the New Hampshire Medicaid Trading Partners of outages or scheduled maintenance periods.

Currently the system maintenance window is Sunday 12:01 am – 12:00 pm Eastern Standard Time (EST). In the event of unscheduled downtime, Conduent EDI Solutions will notify the New Hampshire Medicaid Trading Partners via notifications and/or Web portal banner messages, and will resolve the outage as expeditiously as possible.

For any non-routine downtime planned for the MMIS system, a notification message will be displayed in advance on the login screen (shown below) from the MMIS web-portal to the providers



## Trading Partner Registration



All entities that send electronic transactions to Conduent EDI Solutions for processing and retrieve reports and responses must enroll as EDI Trading Partners. The completed Trading Partner enrollment application provides the Conduent New Hampshire Provider Relations Unit the information necessary to assign a Login Name, Login ID, and Trading Partner ID, which are required to send or retrieve electronic transactions. The Trading Partner enrollment application is available on the New Hampshire Medicaid Web site at <http://nhmmis.nh.gov>. Click on Provider Enrollment in the Quick Links pod to get to the Trading Partner enrollment application. The direct URL to the provider enrollment page is: <https://nhmmis.nh.gov/portals/wps/portal/ProviderEnrollment>

## Certification and Testing Overview

Conduent X12N transaction code sets are certified by EDIFECS Ramp Management Compliance Check engine, which provides accurate validation of HIPAA transactions (Type 1 EDI Syntax, Type 2 HIPAA Syntax, and some Type 7 NH Trading Partner Specific). Conduent EDI Solutions requires transaction testing with all enrolling Trading Partners for NH Medicaid.

Once a Trading Partner has successfully enrolled for New Hampshire Medicaid and has communicated with a Conduent Business Analyst, the Trading Partner may begin the testing process. Trading partners will be required to participate in EDIFECS Ramp Management testing.

# 3 Testing with the New Hampshire MMIS

Before submitting production files through Conduent EDI Solutions, the Trading Partner must submit one valid test file for each transaction type. If the Trading Partner has received a test status of “Passed,” then the Conduent Business Analyst will contact the Trading Partner and update the Trading Partner status to production.

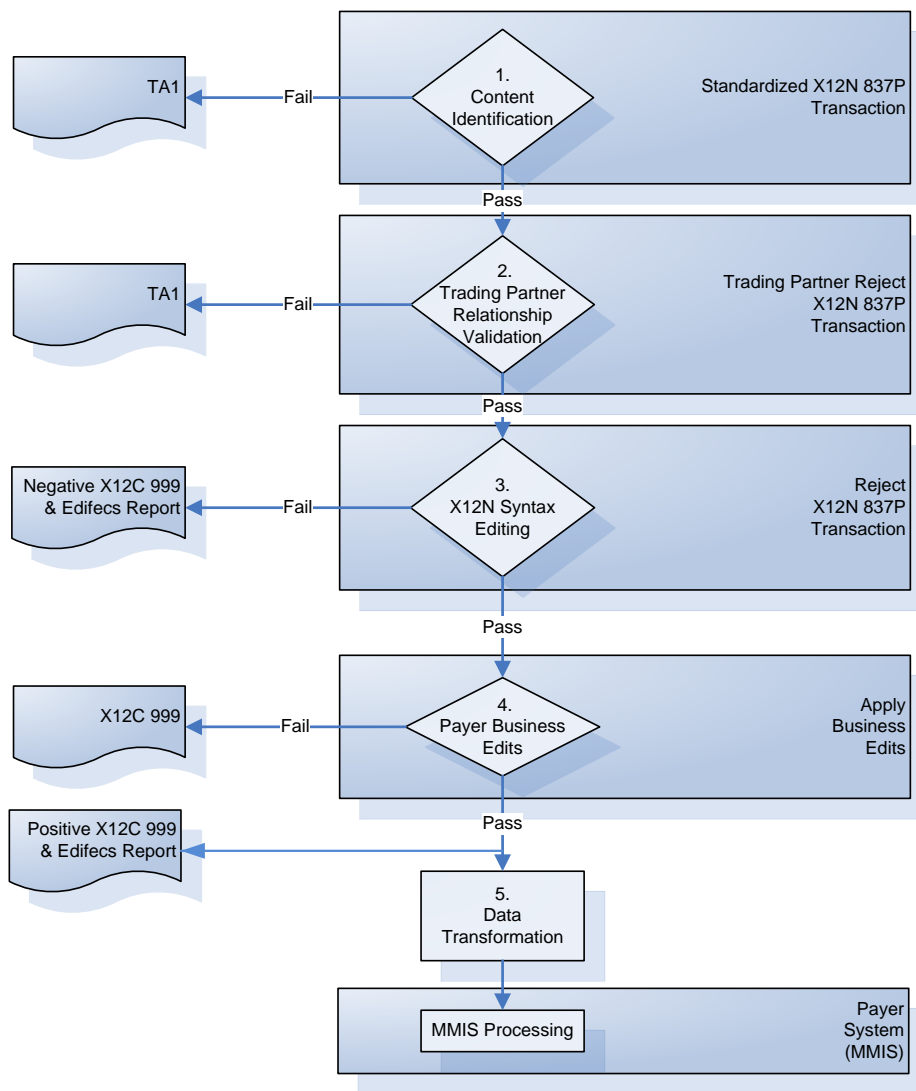
These tests verify a Trading Partner’s ability to submit a specific transaction type containing valid data in the required format. Trading Partners are encouraged to include a minimum of 10 unique transactions per test file to ensure more comprehensive testing. The NH Medicaid supported inbound transaction types are X12N 270, X12N 276, X12N 278, X12N 837P, X12N 837I, and X12N 837D. Changes to the X12N formats may require additional testing.

Should Trading Partners receive a test status of “Failed”, then Trading Partners should review the errors using the EDIFECs Error Report within EDIFECs Ramp Management, correct and resubmit their test file until the file receives a status of “Passed”. If Trading Partners require further assistance with EDIFECs Ramp Management and/or assistance resolving errors, please contact the assigned Conduent EDI Business Analyst by email at [NHMMISED@Conduent.com](mailto:NHMMISED@Conduent.com).

# 4 Connectivity with the New Hampshire MMIS

## Process Flows

### Editing and Validation Flow Diagram



**Legend:**

1. **Content Identification:** Data identification is attempted. If the data is corrupt or intended for another resource, an email notice will be sent to the Conduent EDI Business Analyst for review and follow-up with the submitter. If the data can be identified, it is then checked for Trading Partner Relationship Validation.
2. **Trading Partner Relationship Validation:** The Trading Partner information is validated. If the Trading Partner information is invalid, a TA1 (Interchange Acknowledgement) will be forwarded to the Conduent EDI Solutions Business Analyst center for review and follow-up with the submitter. If the Trading Partner relationship is valid, the data will be passed for X12N syntax validation.
3. **X12N Syntax Validation:** A determination will be made as to whether the data is ASC X12N. An X12C 999 (Implementation Acknowledgement) will be sent to the mailbox of the submitter. The X12C 999 contains **ACCEPT, REJECT or PARTIAL** status. If the file contained syntactical errors, the segment(s) and element(s) where the error(s) occurred will be reported in the X12C 999, and will be further detailed in the EDIFECs Report.
4. **Payer Business Edits:** If the data passes X12N syntax validation, payer business edits, such as the NPI "check digit" validation" will be performed. Any errors found will be returned in an X12C 999, with details explaining the segment(s) and element(s) where the error(s) occurred. The X12C 999 will be sent to the Mailbox System for submitter retrieval.
5. **Data Transformation:** Inbound X12N data is translated to XML format, and passed to the New Hampshire MMIS for processing.

## Transmission Administration Procedures

To receive a 277CA, enrolled New Hampshire Trading Partners will submit X12N 837 transaction data to Conduent EDI Solutions for processing. The TA1 Interchange Acknowledgement reports the syntactical analysis of the interchange header and trailer. The TA1 Interchange Acknowledgement reports the syntactical analysis of the interchange header and trailer. If the data (Interchange Envelope) is invalid, the file will be rejected. If the Trading Partner relationship does not exist (a missing or invalid Trading Partner ID) a TA1 will not be generated because the relationship does not exist within the NH Medicaid EDIFECs Trading Partner Management Database. An email will be sent to the Conduent EDI Business analyst for review and follow-up with the submitter

If you have questions or require assistance with your TA1 or X12C 999 please contact your Conduent Fiscal Agent EDI Business Analyst at [NHMMISEDI@Conduent.com](mailto:NHMMISEDI@Conduent.com). Please include your Trading Partner ID and telephone number in your email.

# Re-Transmission Procedures

## Transmission/Production Issues

When file transmission or technical production issues occur, which could require the re-submission of files, please contact the Conduent New Hampshire Provider Relations Unit at **1 (866) 291-1674**.

Please have the following information available when calling the Conduent New Hampshire Provider Relations Unit regarding transmission and production issues.

- Trading Partner ID
- Web Portal Login Name (if using the Web Portal)
- Secure FTP ID (if using Secure FTP)

# Communication Protocol Specifications

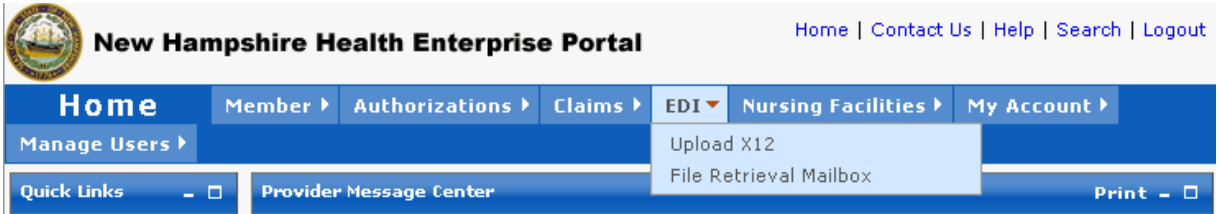
New Hampshire Trading Partners can submit X12N files and download files such as the X12N 835, X12N 277CA, TA1, and X12C 999 via the NH Health Enterprise MMIS Web Portal and Secure FTP.

## Web Portal

The Web Portal method allows a Trading Partner to initiate the retrieval of a file from Conduent EDI Solutions. A Trading Partner must be an authenticated portal user who is either an active New Hampshire Provider, or an authorized representative of the Provider. The Trading Partner accesses the Web Portal via a Web browser and is prompted for a login and password. Trading Partners may select files for download to their PC or work environment using the “Browse” function. All 277CA files retrieved will meet the ASC X12N 277CA standard.

## Web Portal Upload Procedures

1. In your Web browser, log on to the **New Hampshire MMIS Health Enterprise Portal** at <http://nhmmis.nh.gov>
2. From the **EDI** menu, select **Upload X12**.



3. Navigate to the file you wish to upload using the Browse button, or type the path and filename into the File Information field.

The screenshot shows the "Upload X12" form. At the top, it says "Upload X12" and "Print | Help". Below that, there is a "Required field" section with a red asterisk. The text reads: "The page allows you to transmit X12N formatted batches to the Third Party Administrator for the NH-Medicaid Program. For more information on this process, please refer to the 'Contact Us' feature and/or the help feature found in the upper right corner of this page, or call Conduent Provider relations at 96030 223-4774 / Toll free 1-866-291-1674". Below this is a "File Information" section with a red asterisk. It contains a "File Path" input field and a "Browse..." button. At the bottom right, there are "Submit" and "Reset" buttons.

4. Click **Submit**. Information on the file submitted is displayed in the **Upload Completed** screen.

The screenshot shows the "Upload X12 Complete" screen. At the top, it says "Upload X12 Complete" and "Print | Help". Below that, there is a message: "File was successfully received and is being processed. Please check for a confirmation report in your mailbox." At the bottom right, there are two buttons: "Upload Another File" and "Message Center".

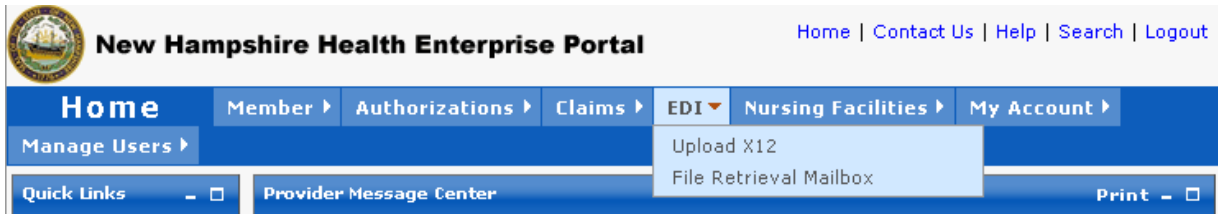
5. To retrieve the file confirmation, click on the **Message Center** button to go to your mailbox.

## Web Portal Data Retrieval Procedures

The Web Portal allows a Trading Partner to initiate file retrieval. Once logged into the Provider Secure Homepage, multiple functions such as File Retrieval are available.

### Downloading Files from the Web Portal

1. In your Web browser, log on to the **New Hampshire MMIS Health Enterprise Portal** at <http://nhmmis.nh.gov>
2. From the **EDI** menu, select **File Retrieval Mailbox**.



3. Select the **X12** radio button; select a file type; and if desired, enter beginning and end dates for the search.

4. Click the **Search** button. The **Results** view displays files matching the search criteria. From the **Results** view, click the Creation Date of the file for downloads.

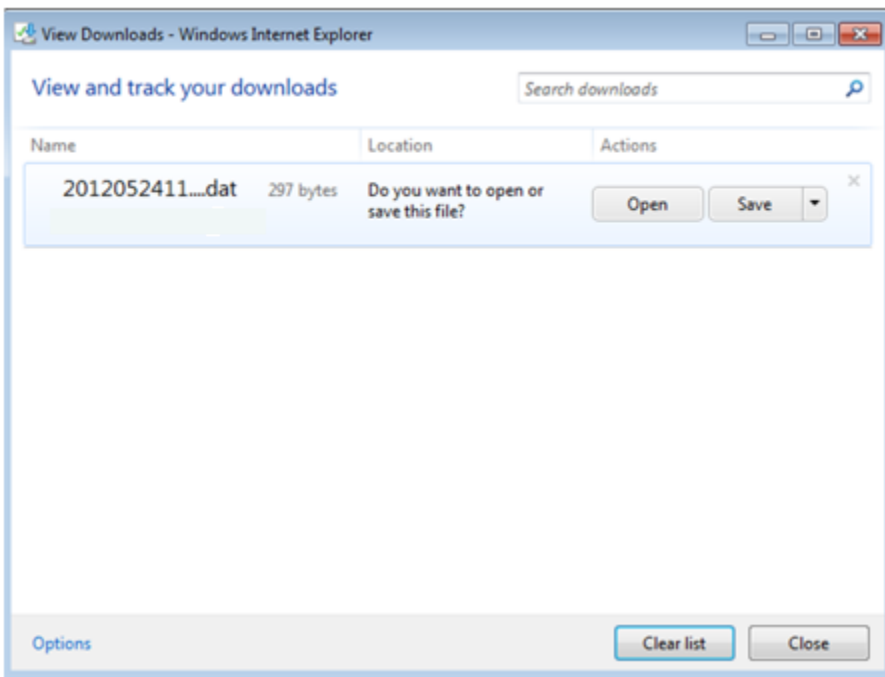
**Note:** After the first time selecting the files, the **Show All** box needs to be checked to retrieve them again

5010

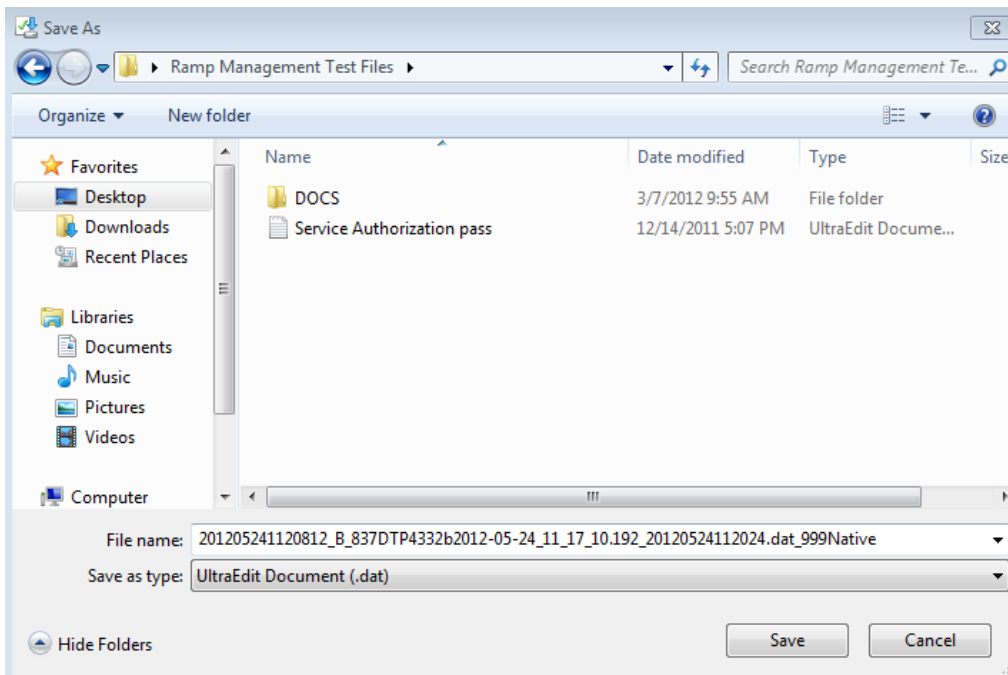
Creation Date	Filename	File Size
<a href="#">Sep 06, 2012</a>	201209061025750_B_201209061025538_B_270_TP045_20120906102509_20120906102509.dat_999Native.dat	296
<a href="#">Sep 06, 2012</a>	201209061025818_B_201209061025729_B_278_TP045_2_20120906102510_20120906102514.dat_999Native.dat	279
<a href="#">Sep 06, 2012</a>	201209061025766_B_201209061025683_B_276_TP045_2_20120906102510_20120906102510.dat_999Native.dat	279
<a href="#">Sep 06, 2012</a>	201209061025251_B_201209061025184_B_837ITP045_20120906102511_20120906102511.dat_999Native.dat	296
<a href="#">Sep 06, 2012</a>	201209061025849_B_201209061025822_B_837D_TP045_2_20120906102510_20120906102514.dat_999Native.dat	333
<a href="#">Sep 06, 2012</a>	201209060745844_B_201209060745662_B_WhiteSpaceInpnt_20120906074505_20120906074505.dat_999Native.dat	318
<a href="#">Sep 06, 2012</a>	201209060740935_B_201209060740475_B_InvalidProv_20120906074006_20120906074006.dat_999Native.dat	296
<a href="#">Sep 06, 2012</a>	201209060720439_B_201209060720133_B_ProfInvalid_20120906072004_20120906072004.dat_999Native.dat	296
<a href="#">Sep 06, 2012</a>	201209060715584_B_201209060715210_B_LFIpnt_20120906071508_20120906071508.dat_999Native.dat	318
<a href="#">Sep 06, 2012</a>	201209060428407_B_201209060428037_B_201209050839111_B_20120905083939_B_Prof_McarInst_20120905083915_20120905083922.dat_20120906042817_20120906042817.dat_999Native.dat	296

1 - 10 of 12 12 >>

5. Click **Save**, to save the file to your PC.



6. Specify a path for download, and click **Save** again.





## Secure file transfer

Secure file transfer is an appropriate alternative to the New Hampshire Web Portal for large volume Trading Partners (i.e. files in excess of 10MB each). For submitting and retrieving files via Secure file transfer, access to the Conduent DMZDMZ site (powered by MOVEit TRANSFERTRANSFER®) is available free of charge to Trading Partners. It should be noted that the Conduent DMZ site is completely separate from New Hampshire Medicaid. Trading partners may use the separate secured Web site for submission and retrieval of files, or any secured FTP product that is compatible with MOVEit TRANSFERTRANSFER. See [MOVEit-Compatible FTP Applications](#).

## Secure file transfer Setup and Support

Secure file transfer setup will usually occur during Trading Partner Enrollment. If the Trading Partner wishes to create a Secure file transfer account, or requires additional support (i.e. account becomes locked or experiences connectivity issues), the Trading Partner should contact the Conduent New Hampshire Provider Relations Unit at **1 (866) 291-1674** (toll-free) or at **(603) 223-4774** (local).

**Note:** Secure file transfer setup is separate from Trading Partner Enrollment, but still coordinated through the Conduent New Hampshire Provider Relations Unit. The Provider Relations Unit may request additional information not obtained during Trading Partner Enrollment during Secure file transfer setup.

Trading Partners set up for submission and/or retrieval of files via the Secure file transfer mechanism will receive connectivity details from the Provider Relations Unit once setup is complete. This information will include login credentials, policies concerning passwords, file retention, and basic information on site navigation.

## MOVEit TRANSFERTRANSFER

MOVEit TRANSFERTRANSFER® is a software product that manages logins, folders, and data as an Internet-exposed secured landing zone. Only secured communications protocols may be used to access the TRANSFERTRANSFER. These include HTTPS, SFTP, and FTPS. FTPS is being phased out as it is considered less secure and is more difficult to manage with firewalls. Data is stored in encrypted format while residing on the TRANSFERTRANSFER.

There are two methods for accessing MOVEit TRANSFERTRANSFER:

1. Uploading files through a secure Web site  
<https://secureft.services.conduent.com/>
2. Sending and receiving files via a Secure file transfer client. MOVEit Freely® is a free Secure file transfer client available for download at <http://www.standardnetworks.com>.

## MOVEit-Compatible FTP applications

MOVEit-Compatible FTP application

HTTPS (HTTP over SSL) Clients	SSH2 SFTP and SCP2 Clients
<p><b>cURL</b> (downloads only)</p> <ul style="list-style-type: none"> <li>▪ AIX; AmigaOS; BeOS; DOS; DragonFly BSD; FreeBSD; HPUX; Linux; NetBSD; NetWare; OpenBSD; OS/2; OS X; QNX; RISC OS; Solaris; SunOS; Tru64 UNIX; UNIXware; VMS; Windows</li> </ul> <p><b>Internet Explorer Web Browser</b></p> <ul style="list-style-type: none"> <li>▪ Macintosh, Windows</li> </ul> <p><b>Firefox Web Browser</b></p> <ul style="list-style-type: none"> <li>▪ any supported OS</li> </ul> <p><b>MOVEit Central</b> Windows Vista Business Ed., 2003, XP Professional, 2000 Server</p> <p><b>MOVEit Central API Java Class</b></p> <ul style="list-style-type: none"> <li>▪ Windows Vista Business Ed., 2003, XP Professional, 2000 Server</li> </ul> <p><b>MOVEit Central API Windows COM Component</b></p> <ul style="list-style-type: none"> <li>▪ Windows Vista Business Ed., 2003, XP Professional, 2000 Server</li> </ul> <p><b>MOVEit TRANSFERTRANSFER API Java Class</b></p> <ul style="list-style-type: none"> <li>▪ any OS with Java v.1.4 or higher</li> </ul> <p><b>MOVEit TRANSFERTRANSFER API Windows COM Component</b></p> <ul style="list-style-type: none"> <li>▪ Windows Vista Business Ed., 2003, XP, 2000, NT 4.0</li> </ul> <p><b>MOVEit Wizard ActiveX Plugin</b></p> <ul style="list-style-type: none"> <li>▪ Internet Explorer Windows</li> </ul> <p><b>MOVEit Wizard Java Plugin</b></p> <ul style="list-style-type: none"> <li>▪ Firefox Linux and Windows; Mozilla Linux and Windows; Netscape Linux and Windows; Opera Linux and Windows; Safari OS X</li> </ul> <p><b>MOVEit Xfer Java</b></p> <ul style="list-style-type: none"> <li>▪ Any OS with Java v.1.4 or higher</li> </ul> <p><b>MOVEit Xfer Windows</b></p> <ul style="list-style-type: none"> <li>▪ Windows Vista Business Ed., 2003, XP, 2000, ME, 98, NT</li> </ul> <p><b>Mozilla Web Browser</b></p> <ul style="list-style-type: none"> <li>▪ any supported OS</li> </ul> <p><b>Netscape Navigator Web Browser</b></p> <ul style="list-style-type: none"> <li>▪ Linux, Macintosh, Windows</li> </ul> <p><b>Opera Web Browser</b></p>	<p><b>Cyberduck</b></p> <ul style="list-style-type: none"> <li>▪ OS X v.10.3 or higher</li> </ul> <p><b>Cyclone Commerce Interchange</b></p> <ul style="list-style-type: none"> <li>▪ Solaris</li> </ul> <p><b>FileZilla</b></p> <ul style="list-style-type: none"> <li>▪ Windows</li> </ul> <p><b>F-Secure SSH</b> (including SCP2)</p> <ul style="list-style-type: none"> <li>▪ Solaris, UNIX, Windows</li> </ul> <p><b>Fugu</b></p> <ul style="list-style-type: none"> <li>▪ OS X v.10.3 or higher</li> </ul> <p><b>IBM Ported Tools</b> (OpenSSH)</p> <ul style="list-style-type: none"> <li>▪ z/OS</li> </ul> <p><b>Ipswitch WS_FTP Pro</b></p> <ul style="list-style-type: none"> <li>▪ Windows</li> </ul> <p><b>J2SSH</b></p> <ul style="list-style-type: none"> <li>▪ Java</li> </ul> <p><b>MacSSH</b></p> <ul style="list-style-type: none"> <li>▪ OS X v.10.3 or higher</li> </ul> <p><b>Magnetk sftpd</b></p> <ul style="list-style-type: none"> <li>▪ Windows</li> </ul> <p><b>MOVEit Central</b></p> <ul style="list-style-type: none"> <li>▪ Windows Vista Business Ed., 2003, XP Professional, 2000 Server</li> </ul> <p><b>NET::SFTP</b> (uses Net::SSH::Perl)</p> <ul style="list-style-type: none"> <li>▪ Linux</li> </ul> <p><b>OpenSSH for sftp</b></p> <ul style="list-style-type: none"> <li>▪ MVS; OS X v.10.3 or higher; Solaris; UNIX; Windows; z/OS v.1.4 or higher</li> </ul> <p><b>PuTTY PSCP and PSFTP</b></p> <ul style="list-style-type: none"> <li>▪ Windows, Windows NT for Alpha</li> </ul> <p><b>Rbrowser</b></p> <ul style="list-style-type: none"> <li>▪ OS X v.10.3 or higher</li> </ul> <p><b>SouthRiver Technologies WebDrive</b></p> <ul style="list-style-type: none"> <li>▪ Windows</li> </ul> <p><b>SSH FileSystem (SSHFS)</b></p> <ul style="list-style-type: none"> <li>▪ Unix (requires OpenSSH and FUSE)</li> </ul> <p><b>SSH Secure Shell FTP</b></p> <ul style="list-style-type: none"> <li>▪ Windows</li> </ul> <p><b>SSH Tectia Client</b></p> <ul style="list-style-type: none"> <li>▪ AIX, HP-UX, Linux, Solaris, Windows</li> </ul>

MOVEit-Compatible FTP application	
HTTPS (HTTP over SSL) Clients	SSH2 SFTP and SCP2 Clients
<ul style="list-style-type: none"> <li>any supported OS</li> </ul> <b>Safari Web Browser</b> <ul style="list-style-type: none"> <li>OS X</li> </ul>	<b>SSH Tectia Connector</b> <ul style="list-style-type: none"> <li>Windows</li> </ul> <b>Stairways Interarchy</b> <ul style="list-style-type: none"> <li>OS X</li> </ul>
<b>AS2 and AS3 (SSL) Clients</b> Clients that are AS2 or AS3 certified by Drummond will be compatible with MOVEit TRANSFER, including: <b>MOVEit Central</b> <ul style="list-style-type: none"> <li>Windows Vista Business Ed., 2003, XP Professional, 2000 Server</li> </ul>	<b>Transmit</b> <ul style="list-style-type: none"> <li>OS X v.10.3 or higher</li> </ul> <b>WinSCP (in SFTP mode)</b> <ul style="list-style-type: none"> <li>Windows</li> </ul>
FTPS (FTP over SSL) Clients	FTPS (FTP over SSL) Clients, Cont.
<b>TRANSFERbTrade TDAccess</b> <ul style="list-style-type: none"> <li>AIX, AS/400, HP-UX, Linux, MVS, Solaris, Windows</li> </ul> <b>C-Kermit FTP</b> <ul style="list-style-type: none"> <li>AIX, QNX, UNIX, VMS</li> </ul> <b>Cleo LexiCom</b> <ul style="list-style-type: none"> <li>AS/400, Linux, UNIX, Windows</li> </ul> <b>cURL</b> <ul style="list-style-type: none"> <li>AIX; AmigaOS; BeOS; DOS; DragonFly BSD; FreeBSD; HPUX; Linux; NetBSD; NetWare; OpenBSD; OS/2; OS X; QNX; RISC OS; Solaris; SunOS; Tru64 UNIX; UNIXware; VMS; Windows</li> </ul> <b>FileZilla</b> <ul style="list-style-type: none"> <li>Windows</li> </ul> <b>GlobalSCAPE CuteFTP Pro</b> <ul style="list-style-type: none"> <li>Windows</li> </ul> <b>GLUB Secure file transfer</b> <ul style="list-style-type: none"> <li>Java</li> </ul> <b>IBM z/OS Secure Sockets FTP</b> <ul style="list-style-type: none"> <li>z/OS</li> </ul> <b>IniCom FlashFXP (GUI v.3.0 or higher)</b> <ul style="list-style-type: none"> <li>Windows</li> </ul> <b>Ipswitch WS_FTP Pro (GUI v.7.0 or higher)</b> <ul style="list-style-type: none"> <li>Windows</li> </ul> <b>LFTP</b> <ul style="list-style-type: none"> <li>AIX, MVS, Solaris, UNIX</li> </ul> <b>MOVEit Buddy</b> <ul style="list-style-type: none"> <li>Windows Vista Business Ed., 2003, XP, 2000, ME, 98, NT</li> </ul>	<b>MOVEit Central</b> <ul style="list-style-type: none"> <li>Windows Vista Business Ed., 2003, XP Professional, 2000 Server</li> </ul> <b>MOVEit Freely</b> <ul style="list-style-type: none"> <li>Windows Vista Business Ed., 2003, XP, 2000, ME, 98, NT</li> </ul> <b>Netkit</b> <ul style="list-style-type: none"> <li>Linux, Solaris, UNIX</li> </ul> <b>Rhino Voyager FTP</b> <ul style="list-style-type: none"> <li>Windows</li> </ul> <b>Seagull Secure file transfer Pro</b> <ul style="list-style-type: none"> <li>Windows</li> </ul> <b>SmartFTP</b> <ul style="list-style-type: none"> <li>Windows</li> </ul> <b>SouthRiver Technologies WebDrive</b> <ul style="list-style-type: none"> <li>Windows</li> </ul> <b>Stairways Interarchy</b> <ul style="list-style-type: none"> <li>OS X</li> </ul> <b>Sterling Commerce Connect:Direct Enterprise Command Line Client</b> <ul style="list-style-type: none"> <li>UNIX, Windows</li> </ul> <b>Surge SSLFTP</b> <ul style="list-style-type: none"> <li>FreeBSD; Linux; Macintosh; Solaris; Windows</li> </ul> <b>TrailBlazer ZMOD</b> <ul style="list-style-type: none"> <li>OS/400</li> </ul> <b>Tumbleweed SecureTransport Clients</b> <ul style="list-style-type: none"> <li>UNIX, Windows</li> </ul> <b>In software IP*Works SSL</b> Windows

# Passwords

**Log in Credentials:** In order to receive your authorized user log in credentials all Trading Partners, regardless of submission method, must be enrolled with NH Medicaid and approved as Trading Partners on the NH Health Enterprise MMIS. Log in credentials include names/ids and passwords, that will be required for the submission of transactions to NH Medicaid.

**Trading Partner ID:** The Trading Partner ID links the Trading Partner to their transaction data and is the NH Health Enterprise MMISs internal key to accessing their Trading Partner information. Please have this number available each time you contact the Conduent New Hampshire Provider Relations Unit at **1 (866) 291-1674** or at **(603) 223-4774** (local). **The following login credentials are issued depending on the chosen communication method.**

**Web Portal User ID/Password:** This Web Portal User ID allows Trading Partners access to the New Hampshire MMIS Health Enterprise Portal for functions that include file submission and file retrieval. The Conduent New Hampshire Provider Relations Unit also uses the logon name to access Web Portal data submissions.

**Secure file transfer ID/Password:** These are the login credentials for the Conduent DMZ site. These allow FTP Trading Partners to access assigned folders for file submission or to retrieve responses. The Conduent New Hampshire Provider Relations Unit also uses this Secure file transfer ID to reference your DMZ data submissions.

# 5 Contact Information

## EDI Customer Service

The Conduent New Hampshire Provider Relations Unit is available to all New Hampshire Medicaid Trading Partners, Monday through Friday from 8:00 a.m. to 5:00 p.m., Eastern Standard Time, at the following numbers:

**Toll Free: 1 (866) 291-1674**

**Local: (603) 223-4774**

## EDI Technical Assistance

The Conduent New Hampshire Provider Relations Unit assists users with questions about electronic submissions. The Conduent New Hampshire Provider Relations Unit is available to all New Hampshire Medicaid Trading Partners, Monday through Friday from 8:00 a.m. to 5:00 p.m., Eastern Standard Time, at **1 (866) 291-1674** (toll-free) or **(603) 223-4774** (local). The Provider Relations Unit specializes in the following:

- Provides information on available services
- Creates user accounts for file submission for approved Trading Partners
- Verifies receipt of electronic transmissions
- Provides assistance to Trading Partners experiencing transmission difficulties

## Provider Services Number

The Conduent New Hampshire Provider Relations Unit is available to all New Hampshire Medicaid Trading Partners, Monday through Friday from 8:00 a.m. to 5:00 p.m., Eastern Standard Time, at **1 (866) 291-1674** (toll-free) or **(603) 223-4774** (local).

## Applicable Web site/E-mail

Please visit [www.nhmmis.nh.gov](http://www.nhmmis.nh.gov) for NH Medicaid provider and Trading Partner services information, including Trading Partner enrollment information, FAQs, manuals and related documentation.

# 6 Control Segments/ Envelopes

## ISA-IEA

Conduent EDI Solutions will create the Interchange Control Segments to validate the Interchange Envelope of each ASC X12 outbound file. The ISA table provides sender and receiver codes, authorization and delimiter information.

TR3 Page	Loop	Segment	Data Element	Industry Name	Comments
<b>Interchange Control Header (ISA)</b>					
C.4	Envelope	ISA	01	Authorization Information Qualifier	00
C.4	Envelope	ISA	06	Interchange Sender ID	026000618
C.5	Envelope	ISA	08	Interchange Receiver ID	Trading Partner ID assigned by New Hampshire Medicaid
C.6	Envelope	ISA	16	Component Element Separator	:

## GS-GE

Conduent EDI Solutions creates single or multiple functional groups within an X12 file.

TR3 Page	Loop	Segment	Data Element	Industry Name	Comments
<b>Functional Group Header (GS)</b>					
C.7	Envelope	GS	02	Application Sender's Code	026000618
C.7	Envelope	GS	03	Application Receiver's Code	Trading Partner ID assigned by NH Medicaid

# ST-SE

Conduent EDI Solutions creates a unique Transaction Set Control Number in the ST02. The ST02 value should match the SE02 value. Should a file contain multiple ST to SE Transaction Sets, each transaction set control number may not be duplicated within the same interchange (ISA to IEA).

TR3 Page	Loop	Segment	Data Element	Industry Name	Comments
<b>Transaction Set Header (ST to SE)</b>					
32	Functional Group	ST	02	Transaction Set Control Number	Refer to the X12 TR3 Guide
<b>Transaction Set Trailer (SE)</b>					
102	Functional Group	SE	02	Transaction Set Control Number	Refer to the X12 TR3 Guide

# 7 New Hampshire Medicaid Specific Business Rules and Limitations

Many of the data elements detailed in this Companion Guide reflect New Hampshire business requirements, but still meet the standard requirements in the ASC X12N Implementation Guide. Inclusion of a “business-required” data field, as defined by this Companion Guide, will aid in the delivery of a positive response from the New Hampshire Health Enterprise MMIS. For more information regarding New Hampshire specific billing requirements, consult the applicable NH Medicaid provider billing manual, which can be downloaded from the New Hampshire Medicaid Web site at: <http://nhmmis.nh.gov>.

**Note on decimal/amount fields:** Even though the X12N transaction defines Amount fields as having an 18-byte maximum, there is an additional HIPAA rule that limits all decimal fields to a maximum of 10 characters, including the two implied or reported decimal places. Accordingly, for all decimal or amount fields:

- “123456789012” is not an acceptable amount, because it is greater than 10 bytes.
- “12345678.90” is acceptable because the number of digits is not greater than 10; the decimal point itself is not limited by the rule.
- However, “1234567890” is not acceptable because the X12N engine assumes that a decimal point and succeeding zeroes are implied so that the actual number being communicated is “1234567890.00”, which is greater than 10 bytes.
- The 10-byte limitation applies to all decimal or amount fields, including AMT segments, but also including any other fields that hold amounts or decimals, such as 837 SV207, CAS03, CAS06, CAS09, CAS12, CAS15, CAS18, HI01-5, HI02-5, HCP02 and HCP03, etc.

For all fields not listed in these bullets, follow the guidelines in the ASC X12N Implementation Guides (TR3), available at <http://store.x12.org/store/healthcare-5010-consolidated-guides>.



# 8 Acknowledgements and/or Reports

## Transmission Errors and Reports

The 277CA is an outbound transaction, so New Hampshire Trading Partners will not receive any acknowledgements or reports.

# 9 Trading Partner Agreements

Prior to engaging in EDI with the New Hampshire MMIS Enterprise, prospective Trading Partners must complete a Trading Partner enrollment package, which includes a Trading Partner Signature Agreement Form that requires an original signature. Please follow all enrollment instructions and mail the signed Trading Partner Agreement Form to the Conduent NH Medicaid Fiscal Agent, along with any other required documents to complete the enrollment application process.

Please find all New Hampshire Provider/Trading Partner Enrollment information at: <https://nhmmis.nh.gov/portals/wps/portal/ProviderEnrollment>

The mailing address is:

Conduent Provider Relations Unit  
P. O. Box 2059  
Concord, NH 03302-2059

## Trading Partners

In simple terms, an EDI Trading Partner is defined as any provider or agent acting on behalf of the provider that transmits electronic transaction data to or receives electronic transaction data from a health plan.

There are two different types of Trading Partners from the New Hampshire Medicaid:

First, there are Vendors, Billing Agents, Clearinghouses and Switch Vendors who engage in Electronic Data Interchange (EDI) which may include claims and eligibility inquiries on behalf of enrolled NH Medicaid providers. These Trading Partners are not enrolled providers, their only interaction with the MMIS is to submit and retrieve electronic data files.

Second, there are providers re-enrolling under the Medicaid Program who use their own software programs to engage in Electronic Data Interchange (EDI) with the New Hampshire Medicaid. Some providers may use the MMIS online file upload and retrieval features via the New Hampshire MMIS Health Enterprise Portal.

# 10 Transaction Specific Information

This section contains data clarifications, including New Hampshire-specific data requirements. For additional guidance on the use of business rules, please see [Section 7 New Hampshire Medicaid Specific Business Rules and Limitations](#)

## ASC X12N 277CA Health Care Claim Acknowledgment

TR3 Page	Loop	Segment	Data Element	Industry Name	Comments
<b>Information Source Name (NM1)</b>					
38	2100A	NM1	01	Entity Identifier Code	PR
38	2100A	NM1	03	Information Source Name	NH Medicaid
38	2100A	NM1	08	Identification Code Qualifier	PI
39	2100A	NM1	09	Information Source Identifier	026000618
<b>Information Receiver Status Information (STC)</b>					
50	2200B	STC	01-1	Health Care Claim Status Category Code	A2
51	2200B	STC	01-2	Health Care Claim Status Code	20
51	2200B	STC	01-3	Entity Identifier Code	PR
52	2200B	STC	03	Action Code	WQ
<b>Billing Provider Status Information (STC)</b>					
65	2200C	STC	01-1	Health Care Claim Status Category Code	A2

TR3 Page	Loop	Segment	Data Element	Industry Name	Comments
66	2200C	STC	01-2	Health Care Claim Status Code	20
66	2200C	STC	01-3	Entity Identifier Code	PR
66	2200C	STC	03	Action Code	WQ
<b>Patient Name (NM1)</b>					
78	2100D	NM1	08	Identification Code Qualifier	MI
78	2100D	NM1	09	Patient Identification Number	NH Medicaid ID
<b>Claim Level Status Information (STC)</b>					
80	2200D	STC	01-1	Health Care Claim Status Category Code	A2
81	2200D	STC	01-2	Health Care Claim Status Code	20
81	2200D	STC	01-3	Entity Identifier Code	PR
82	2200D	STC	03	Action Code	WQ
<b>Payer Claim Control Number (REF)</b>					
85	2200D	REF	02	Payer Claim Control Number	17 digit NH Medicaid TCN

# Appendices

## Implementation Checklist

Conduent does not offer an Implementation Checklist for our Trading Partner EDI services with the New Hampshire Medicaid. The Conduent New Hampshire Provider Relations Unit assists new Trading Partners with enrollment and testing, but a formal implementation checklist is not necessary.

## Business Scenarios

Please contact the Conduent New Hampshire Provider Relations Unit to discuss your specific EDI related business needs with New Hampshire Medicaid, should they not be covered in this guide or other available New Hampshire Medicaid X12N transaction companion guides.

## Transmission Examples

Please contact the Conduent New Hampshire Provider Relations Unit for any question regarding transmission examples.

## Frequently Asked Questions

For current Provider and Trading Partner FAQs, please visit the following page:

<https://nhmmis.nh.gov/portals/wps/portal/ProviderFaq>

# Change Summary

Version	Date	Description	Description of Changes
1.0	11/26/2012	Initial Document for Deliverables	Document reformatted to meet CAQH CORE standard companion guide format (Phase I CORE Req. 152). Conduent branding applied.
1.1	12/06/2012	Recommendation from the X12 Committee	Renamed Title, Renamed Footer, Removed "ANSI" from document  Deleted GS08 on page 16
1.2	11/27/2013	URL for Provider Enrollment	Updated URL for Provider Enrollment on page 3
1.3	12/23/2013	Updated Trading Partner notice for downtime	Updated Section 2 page 3 for Trading Partner notice
1.4	02/28/2014	Updated Process Flow diagram	Updated Process Flow Section 4 page 5
1.5	06/01/2014	Updated Legend	Updated legend information on page 7
1.6	05/08/2015	6 Control Segments/ Envelopes	Updated GS-GE segment statement page 18
1.6	05/08/2015	2 Getting Started – Working with New Hampshire Medicaid	Updated scheduled maintenance periods page 3
1.6	05/13/2015	Non-Routine Downtime Notification	Updated the description related to the process for displaying any Non-routine downtime page 3.
1.7	8/28/2017	Update Brand	Update brand to Conduent

